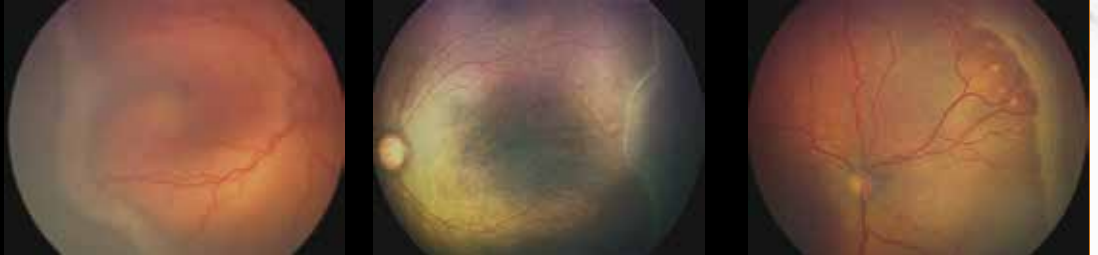




RetCam[™] Images

Retinopathy of Prematurity



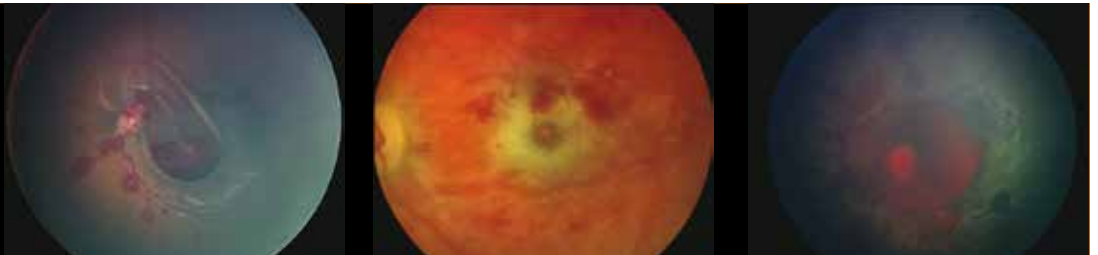
Fluorescein Angiography



Retinoblastoma
















Retinal Hemorrhages



The Anterior Chamber



LENS		FIELD OF VIEW	APPLICATIONS	ADVANTAGES
D1300		<p>130 DEGREES – ROP, PREMATURE</p>  	<p>PEDIATRIC FUNDUS</p> <ul style="list-style-type: none"> - Posterior Pole - Equator and Ora Serrata with scleral depression - Retinal Vasculature - Hemorrhages - Tumors and Structural Abnormalities <p>ANTERIOR CHAMBER</p> <ul style="list-style-type: none"> - Iridocorneal Angle - Iris Structure - Crystalline Lens Changes - Tumors and Masses 	<ul style="list-style-type: none"> • Wide field of view • Small tip • Light weight • Multipurpose wide-angle applications • Handles iridocorneal angle
B1200		<p>120 DEGREES – CHILDREN'S LENS</p>  	<p>PEDIATRIC FUNDUS</p> <ul style="list-style-type: none"> - Posterior Pole - Equator and Ora Serrata with scleral depression - Retinal Vasculature - Hemorrhages - Tumors and Structural Abnormalities <p>ANTERIOR CHAMBER</p> <ul style="list-style-type: none"> - Iridocorneal Angle - Iris Structure - Crystalline Lens Changes - Tumors and Masses 	<ul style="list-style-type: none"> • Greater contrast than D1300 • Suited for darker pigmented retina • Handles iridocorneal angle • Multipurpose wide-angle applications
E800		<p>80 DEGREES – HIGHER CONTRAST LENS</p> 	<p>PEDIATRIC AND ADULT POSTERIOR POLE</p> <p>Detailed views of:</p> <ul style="list-style-type: none"> - Disease Processes - Macular Disorders - Vascular Malformations - Posterior Tumors and Lesions 	<ul style="list-style-type: none"> • Increased contrast • Moderate magnification • Visualize detail of the posterior pole and adult retina
C300		<p>30 DEGREES – HIGH MAGNIFICATION LENS</p>  	<p>PEDIATRIC AND ADULT MACULA AND DISC</p> <p>High magnification of:</p> <ul style="list-style-type: none"> - Macular Detail - Optic Nerve Structure - Neoplastic Pathologies <p>NON-CONTACT ANTERIOR CHAMBER</p> <ul style="list-style-type: none"> - Lens Opacities - Iris Detail - Conjunctival Lesions 	<ul style="list-style-type: none"> • High contrast/magnification for macular views • Non-contact anterior chamber views • Good red-reflex image in non-contact mode with eye dilation
PORTRAIT LENS		<p>PORTRAIT LENS – EXTERNAL LENS</p> 	<p>IRIS AND CONJUNCTIVA LIDS AND LASHES POSITIONS OF GAZE EXTERNAL TRAUMA</p>	<p>Includes:</p> <ul style="list-style-type: none"> • Ocular adnexa • Both eyes • Face • Clinical procedures